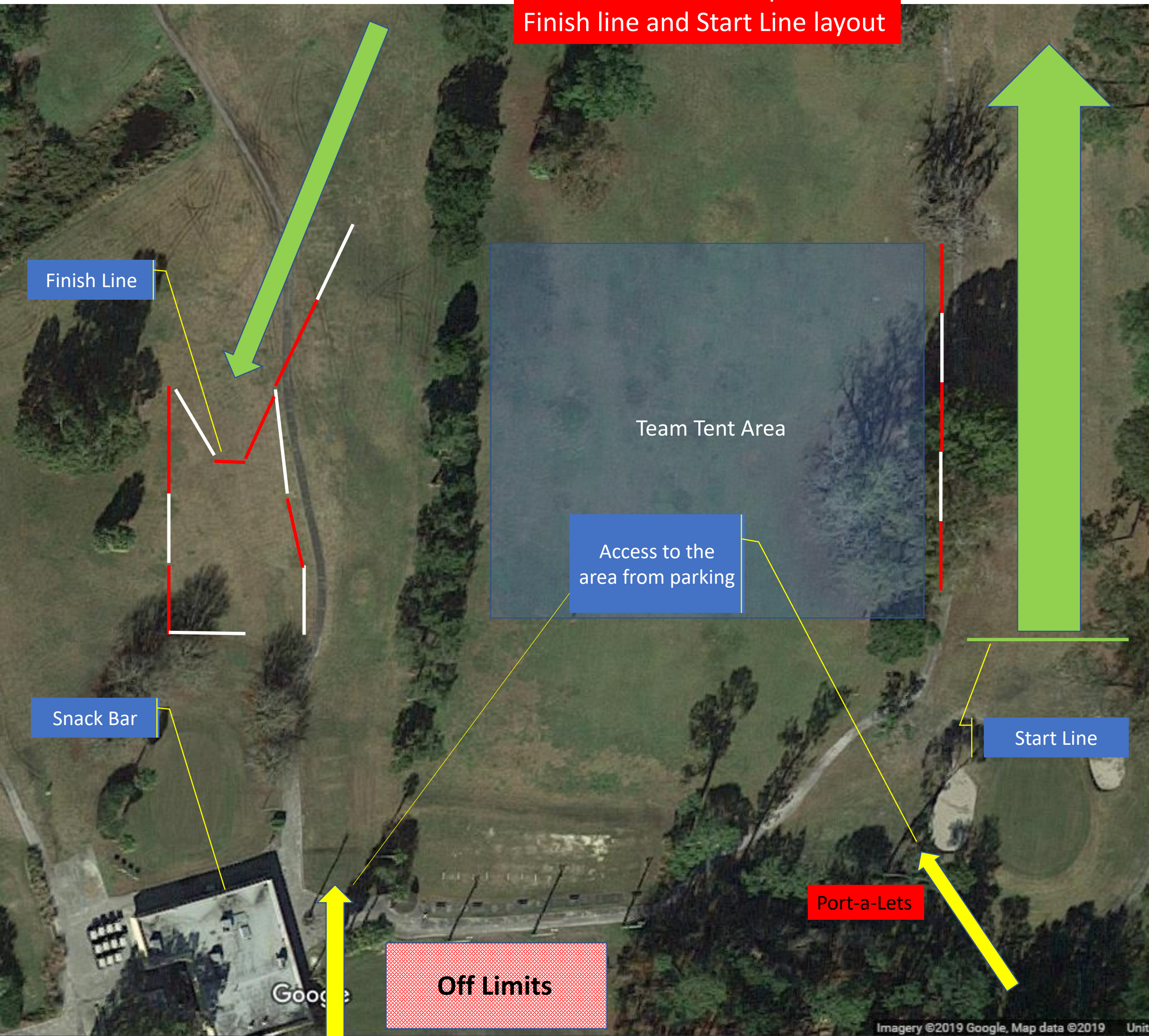


New World Golf Complex Finish line and Start Line layout



Teams can set up tents anywhere in the tent area

Spectators are asked to remain behind the roped off areas

The Green arrows represent the path runners will take from the start line and to the finish line

Please do not walk on the off-limits area which is a putting green next to the snack bar building.

The Snack Bar serves a full menu of items

New World Golf Complex
3K, 2K, 1K Course layout

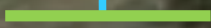


New World Golf Complex
3K Course

Creek

Finish Line

Start Line



Google

New World

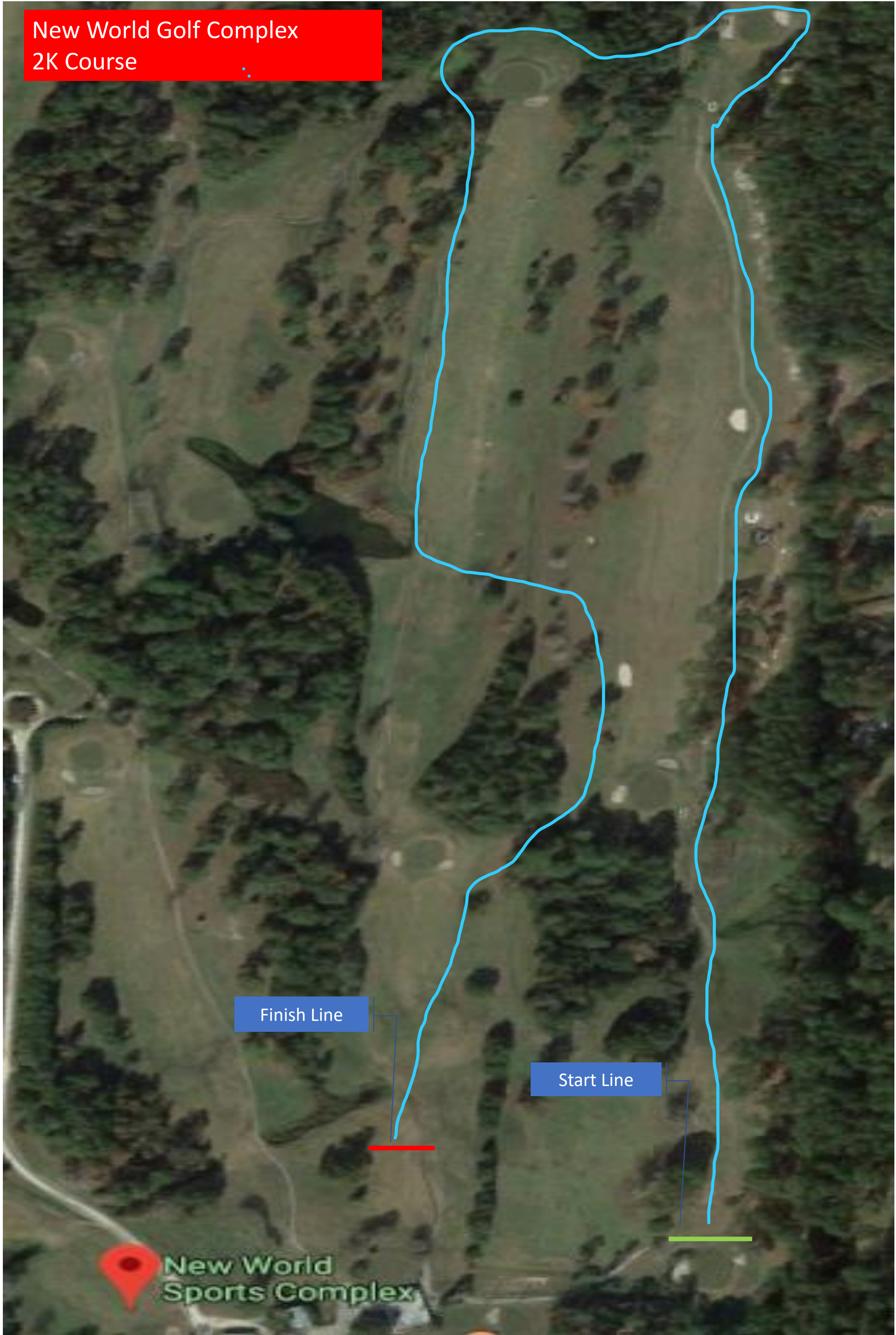
Imagery ©2019

New World Golf Complex
2K Course

Finish Line

Start Line

New World
Sports Complex



New World Golf Complex
1K Course



Finish Line

Start Line

Complex

New World Golf Complex
2K Course Turn markings
during 3K race



Race 1 and 2 (3K Races)
An arrow blocks the 2K turn as runners approach from the East

3K Path from start line

3K Path to Finish Line

Google

New World Golf Complex
2K Course Turn markings
during 3K race



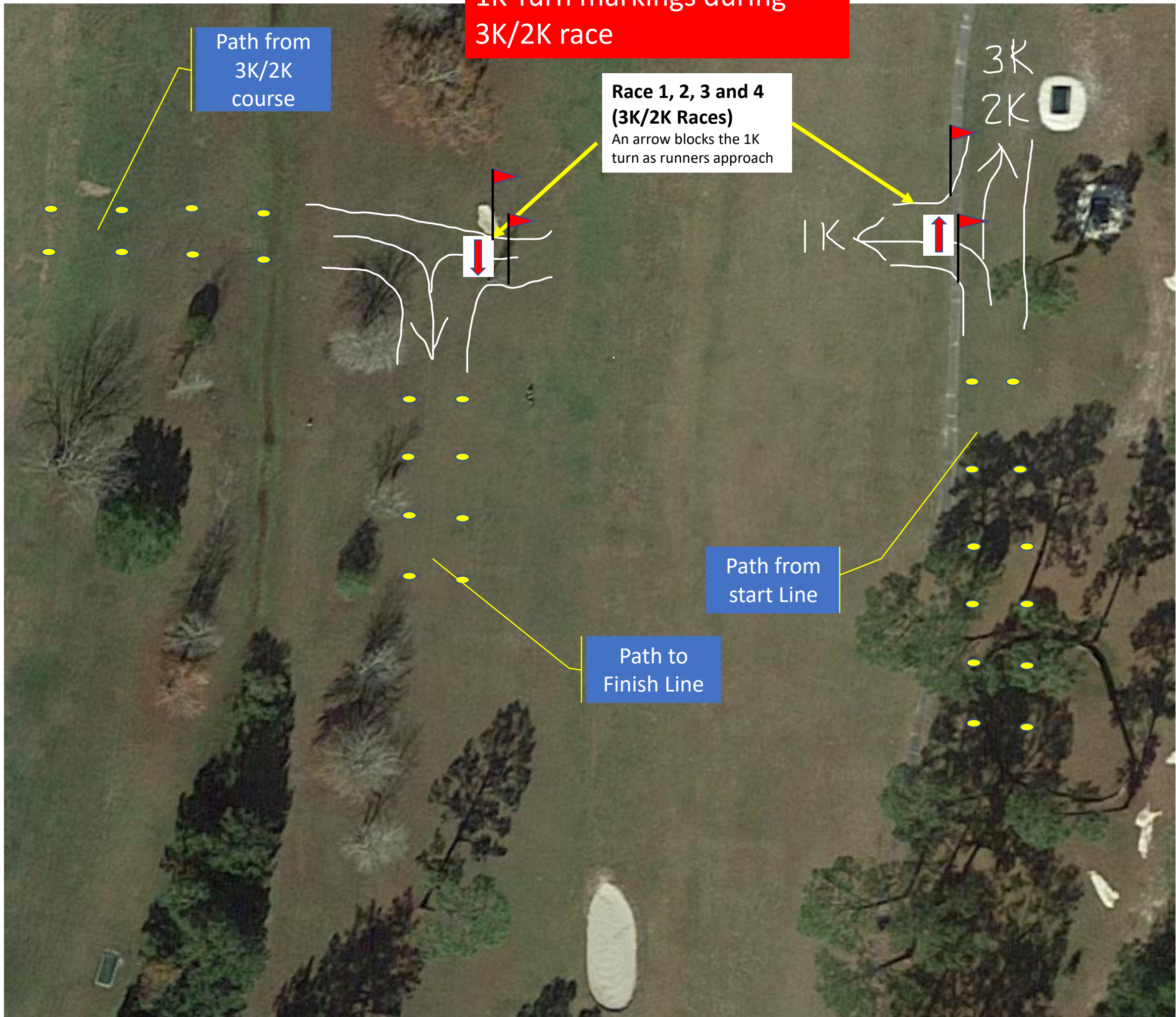
Race 3 and 4 (2K Races)
An arrow sign and 2K Turn sign block the 3K path as runners approach from the East

Path from start line

Path to Finish Line

Google

**New World Golf Complex
1K Turn markings during
3K/2K race**



Path from
3K/2K
course

**Race 1, 2, 3 and 4
(3K/2K Races)**
An arrow blocks the 1K
turn as runners approach

Path from
start Line

Path to
Finish Line

3K
2K

1K

New World Golf Complex
1K Turn markings during 1K race

