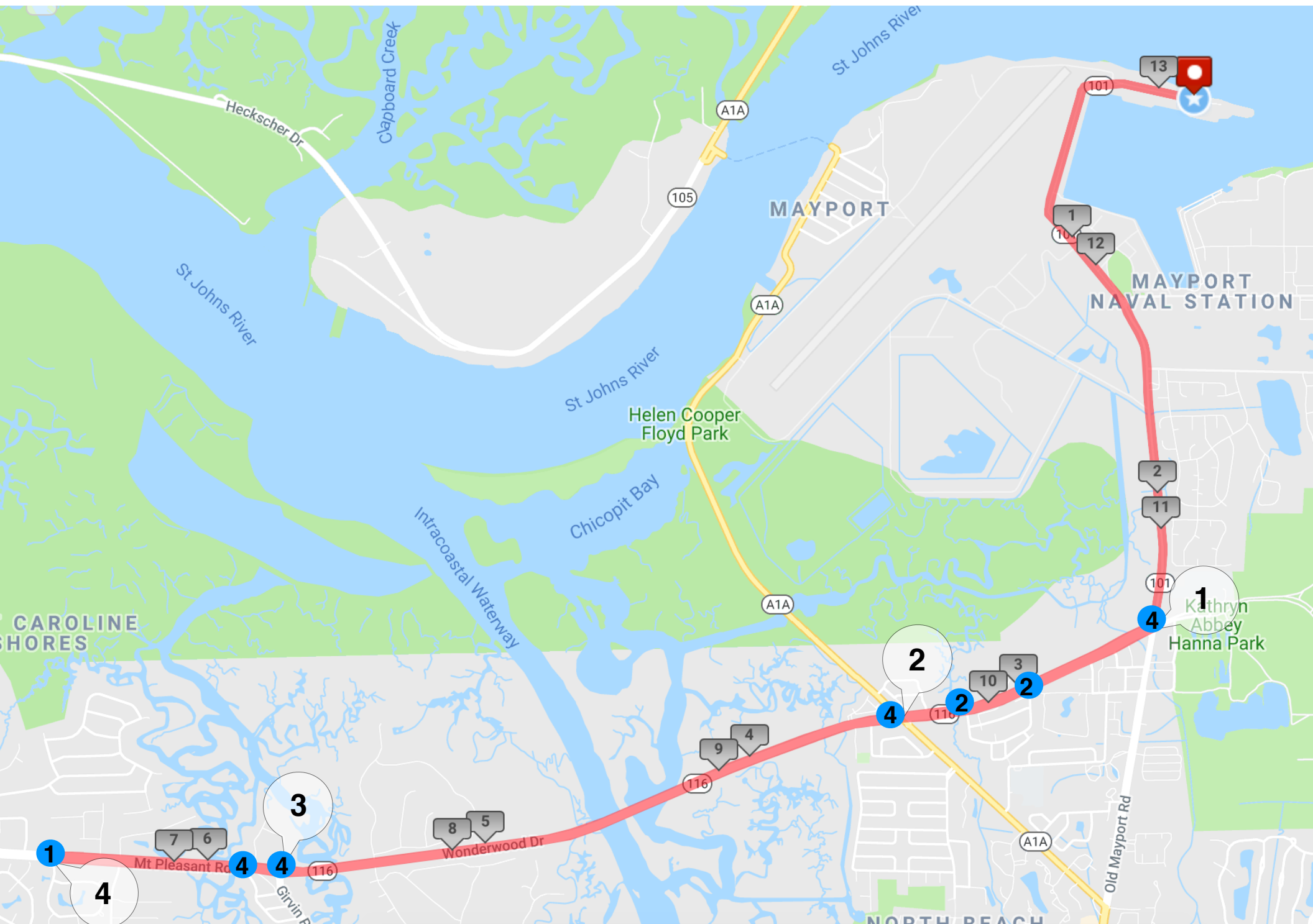


- Split point and timing tent
- Vehicular traffic
- Runners path
- Cones
- Detour sign boards
- Police Officers

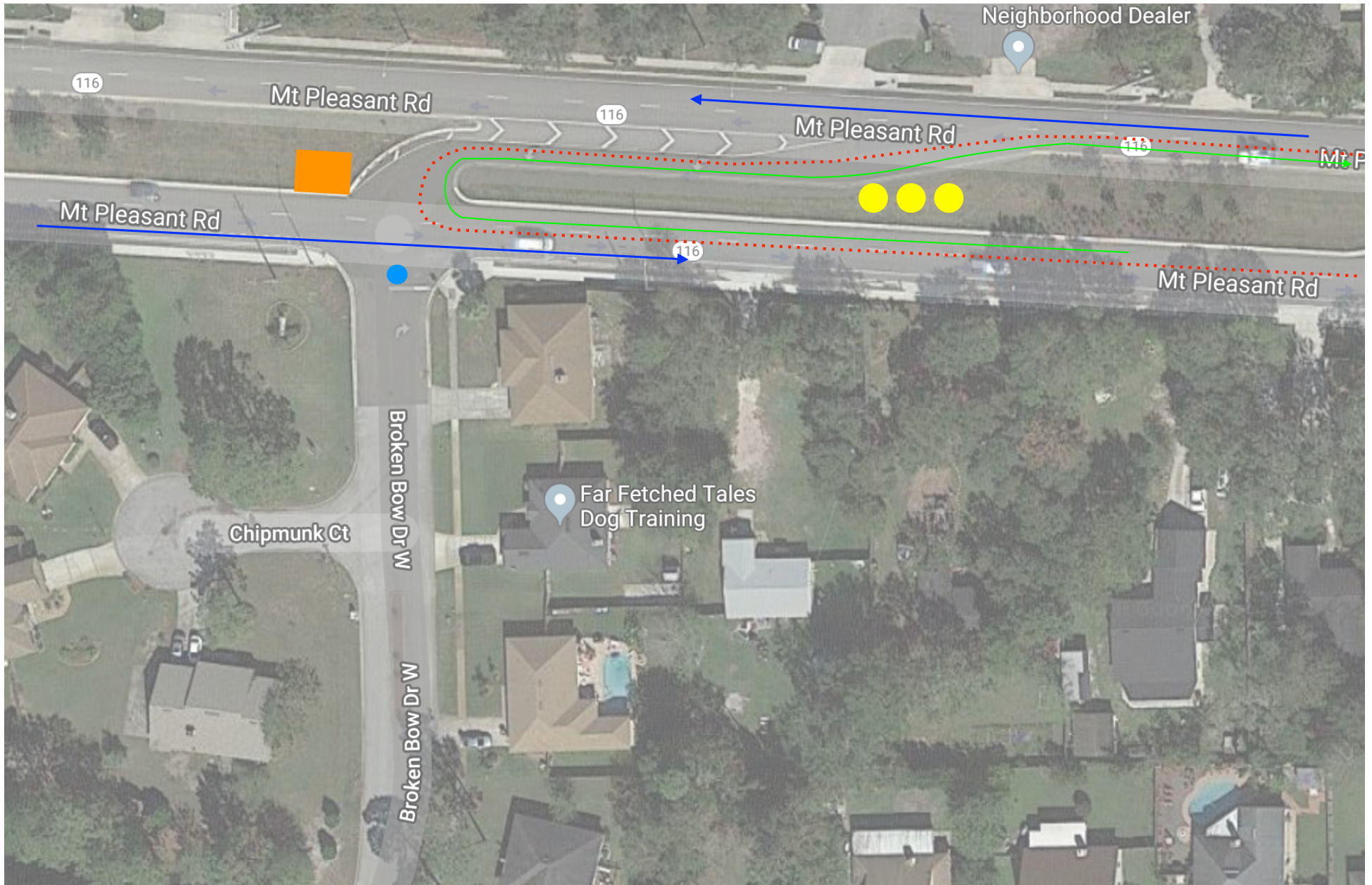




Detour sign





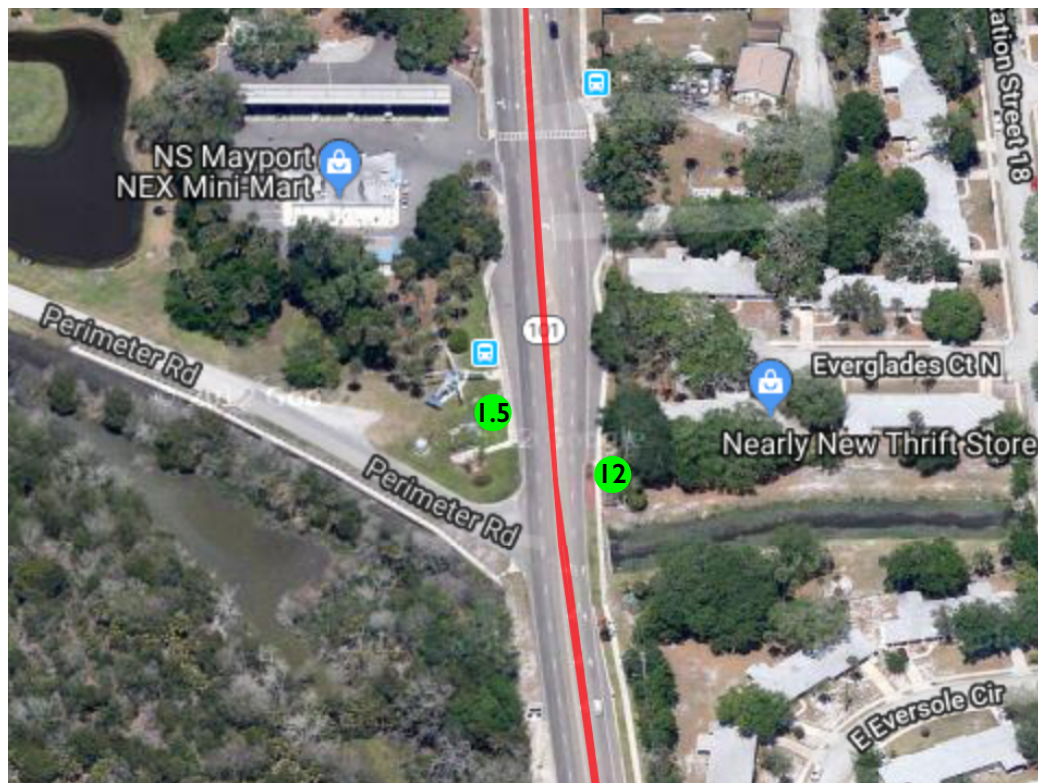


● Portalets

■ Detour sign

Aid Station #1

Mile 1.5 and will move across the street for 12



Water Station – Checklist

- Get adequate rest the night prior
- Wear protective gloves and use cups only once
- Fill cups halfway
- Keep runners away from table
- Do not step out into the runners to distribute water
- Hold the cups from the bottom when dispensing
- Visually inspect roadway for any debris or unsafe condition
- Watch for emergency situations and report – Call 911 for emergencies, call Command Center for all health issues
- Monitor traffic flow and encourage runners to keep moving!
- Use caution when extending cup out and reaching over runners
- Know the surrounding area and medical stations and emergency reporting
- Use caution when removing cups from ground. Have a person to direct runners around person sweeping.
- If near intersection, be alert to pedestrian traffic and cyclists
- Don't splash runners with water unless they ask for it

Clean Up

- After the last runner, start breakdown – disassemble tables, empty containers and prepare items for pick-up
- Clean up cups off roadway, walk 100 yards in both directions for cup clean up
- Keep bottled water intact – we use it later

Emergency Response

- In case of a cardiac incident, runner collapse, or other emergency, FIRST call 911, then alert the nearest ham radio operator, medical person, and Command Center. Know your location so you can provide it when asked
- Medical volunteers (EMT, first aid, CPR) are at some stations to monitor runners. You don't need medical training to spot a runner in trouble. Weaving and staggering are signs of trouble, although runners usually insist they are fine when you ask. Please note bib number of any runner who appear to be in rough shape, alert nearest medical person, ham radio operator, and call Command Center. When in doubt, call 911 first. EMS units are on call to respond to emergencies



Aid Station #2

Mile 3

Water Station – Checklist

- Get adequate rest the night prior
- Wear protective gloves and use cups only once
- Fill cups halfway
- Keep runners away from table
- Do not step out into the runners to distribute water
- Hold the cups from the bottom when dispensing
- Visually inspect roadway for any debris or unsafe condition
- Watch for emergency situations and report – Call 911 for emergencies, call Command Center for all health issues
- Monitor traffic flow and encourage runners to keep moving!
- Use caution when extending cup out and reaching over runners
- Know the surrounding area and medical stations and emergency reporting
- Use caution when removing cups from ground. Have a person to direct runners around person sweeping.
- If near intersection, be alert to pedestrian traffic and cyclists
- Don't splash runners with water unless they ask for it

Clean Up

- After the last runner, start breakdown – disassemble tables, empty containers and prepare items for pick-up
- Clean up cups off roadway, walk 100 yards in both directions for cup clean up
- Keep bottled water intact – we use it later

Emergency Response

- In case of a cardiac incident, runner collapse, or other emergency, FIRST call 911, then alert the nearest ham radio operator, medical person, and Command Center. Know your location so you can provide it when asked
- Medical volunteers (EMT, first aid, CPR) are at some stations to monitor runners. You don't need medical training to spot a runner in trouble. Weaving and staggering are signs of trouble, although runners usually insist they are fine when you ask. Please note bib number of any runner who appear to be in rough shape, alert nearest medical person, ham radio operator, and call Command Center. When in doubt, call 911 first. EMS units are on call to respond to emergencies

Aid Station #3

Mile 4



Water Station – Checklist

- Get adequate rest the night prior
- Wear protective gloves and use cups only once
- Fill cups halfway
- Keep runners away from table
- Do not step out into the runners to distribute water
- Hold the cups from the bottom when dispensing
- Visually inspect roadway for any debris or unsafe condition
- Watch for emergency situations and report – Call 911 for emergencies, call Command Center for all health issues
- Monitor traffic flow and encourage runners to keep moving!
- Use caution when extending cup out and reaching over runners
- Know the surrounding area and medical stations and emergency reporting
- Use caution when removing cups from ground. Have a person to direct runners around person sweeping.
- If near intersection, be alert to pedestrian traffic and cyclists
- Don't splash runners with water unless they ask for it

Clean Up

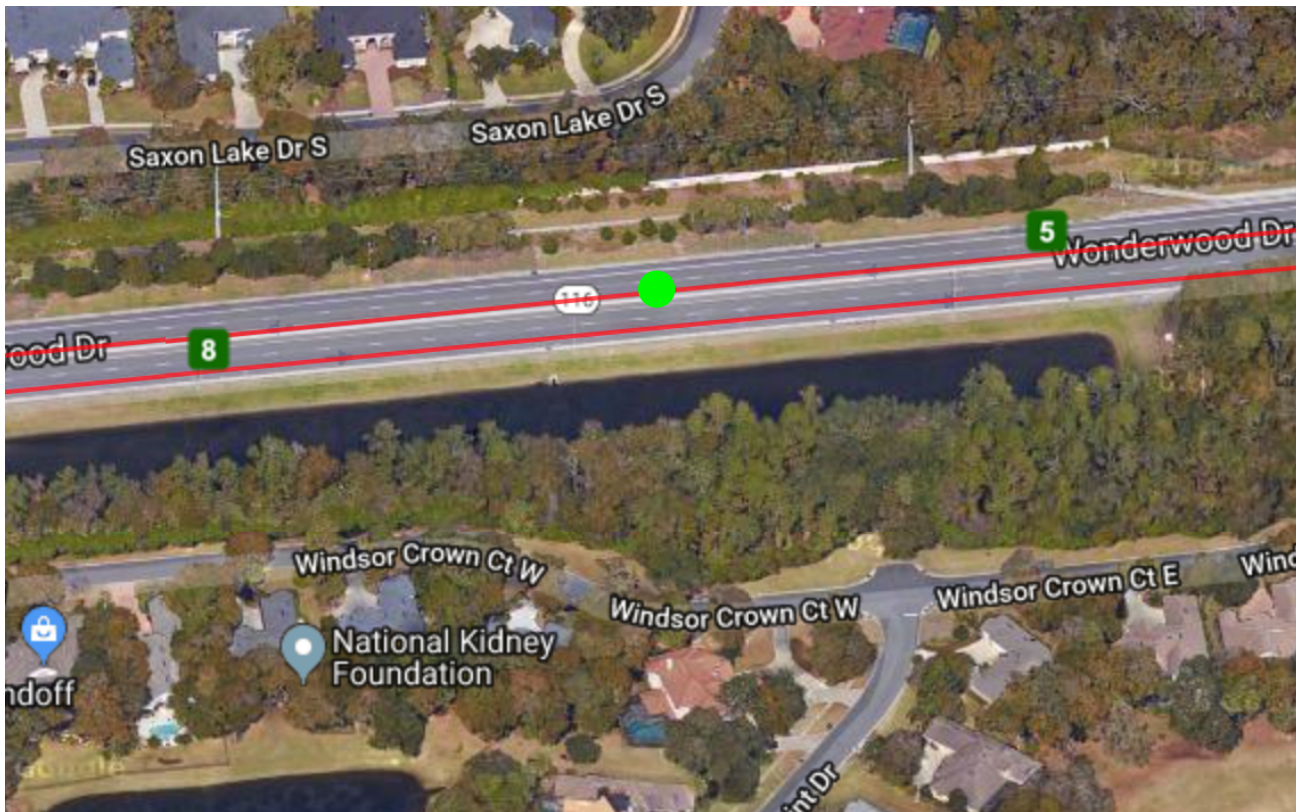
- After the last runner, start breakdown – disassemble tables, empty containers and prepare items for pick-up
- Clean up cups off roadway, walk 100 yards in both directions for cup clean up
- Keep bottled water intact – we use it later

Emergency Response

- In case of a cardiac incident, runner collapse, or other emergency, FIRST call 911, then alert the nearest ham radio operator, medical person, and Command Center. Know your location so you can provide it when asked
- Medical volunteers (EMT, first aid, CPR) are at some stations to monitor runners. You don't need medical training to spot a runner in trouble. Weaving and staggering are signs of trouble, although runners usually insist they are fine when you ask. Please note bib number of any runner who appear to be in rough shape, alert nearest medical person, ham radio operator, and call Command Center. When in doubt, call 911 first. EMS units are on call to respond to emergencies

Aid Station #4

Mile 5 and 8



Water Station – Checklist

- Get adequate rest the night prior
- Wear protective gloves and use cups only once
- Fill cups halfway
- Keep runners away from table
- Do not step out into the runners to distribute water
- Hold the cups from the bottom when dispensing
- Visually inspect roadway for any debris or unsafe condition
- Watch for emergency situations and report – Call 911 for emergencies, call Command Center for all health issues
- Monitor traffic flow and encourage runners to keep moving!
- Use caution when extending cup out and reaching over runners
- Know the surrounding area and medical stations and emergency reporting
- Use caution when removing cups from ground. Have a person to direct runners around person sweeping.
- If near intersection, be alert to pedestrian traffic and cyclists
- Don't splash runners with water unless they ask for it

Clean Up

- After the last runner, start breakdown – disassemble tables, empty containers and prepare items for pick-up
- Clean up cups off roadway, walk 100 yards in both directions for cup clean up
- Keep bottled water intact – we use it later

Emergency Response

- In case of a cardiac incident, runner collapse, or other emergency, FIRST call 911, then alert the nearest ham radio operator, medical person, and Command Center. Know your location so you can provide it when asked
- Medical volunteers (EMT, first aid, CPR) are at some stations to monitor runners. You don't need medical training to spot a runner in trouble. Weaving and staggering are signs of trouble, although runners usually insist they are fine when you ask. Please note bib number of any runner who appear to be in rough shape, alert nearest medical person, ham radio operator, and call Command Center. When in doubt, call 911 first. EMS units are on call to respond to emergencies

Aid Station #5

Mile 6 and 7



Water Station – Checklist

- Get adequate rest the night prior
- Wear protective gloves and use cups only once
- Fill cups halfway
- Keep runners away from table
- Do not step out into the runners to distribute water
- Hold the cups from the bottom when dispensing
- Visually inspect roadway for any debris or unsafe condition
- Watch for emergency situations and report – Call 911 for emergencies, call Command Center for all health issues
- Monitor traffic flow and encourage runners to keep moving!
- Use caution when extending cup out and reaching over runners
- Know the surrounding area and medical stations and emergency reporting
- Use caution when removing cups from ground. Have a person to direct runners around person sweeping.
- If near intersection, be alert to pedestrian traffic and cyclists
- Don't splash runners with water unless they ask for it

Clean Up

- After the last runner, start breakdown – disassemble tables, empty containers and prepare items for pick-up
- Clean up cups off roadway, walk 100 yards in both directions for cup clean up
- Keep bottled water intact – we use it later

Emergency Response

- In case of a cardiac incident, runner collapse, or other emergency, FIRST call 911, then alert the nearest ham radio operator, medical person, and Command Center. Know your location so you can provide it when asked
- Medical volunteers (EMT, first aid, CPR) are at some stations to monitor runners. You don't need medical training to spot a runner in trouble. Weaving and staggering are signs of trouble, although runners usually insist they are fine when you ask. Please note bib number of any runner who appear to be in rough shape, alert nearest medical person, ham radio operator, and call Command Center. When in doubt, call 911 first. EMS units are on call to respond to emergencies



Aid Station #6

Mile 9

Water Station – Checklist

- Get adequate rest the night prior
- Wear protective gloves and use cups only once
- Fill cups halfway
- Keep runners away from table
- Do not step out into the runners to distribute water
- Hold the cups from the bottom when dispensing
- Visually inspect roadway for any debris or unsafe condition
- Watch for emergency situations and report – Call 911 for emergencies, call Command Center for all health issues
- Monitor traffic flow and encourage runners to keep moving!
- Use caution when extending cup out and reaching over runners
- Know the surrounding area and medical stations and emergency reporting
- Use caution when removing cups from ground. Have a person to direct runners around person sweeping.
- If near intersection, be alert to pedestrian traffic and cyclists
- Don't splash runners with water unless they ask for it

Clean Up

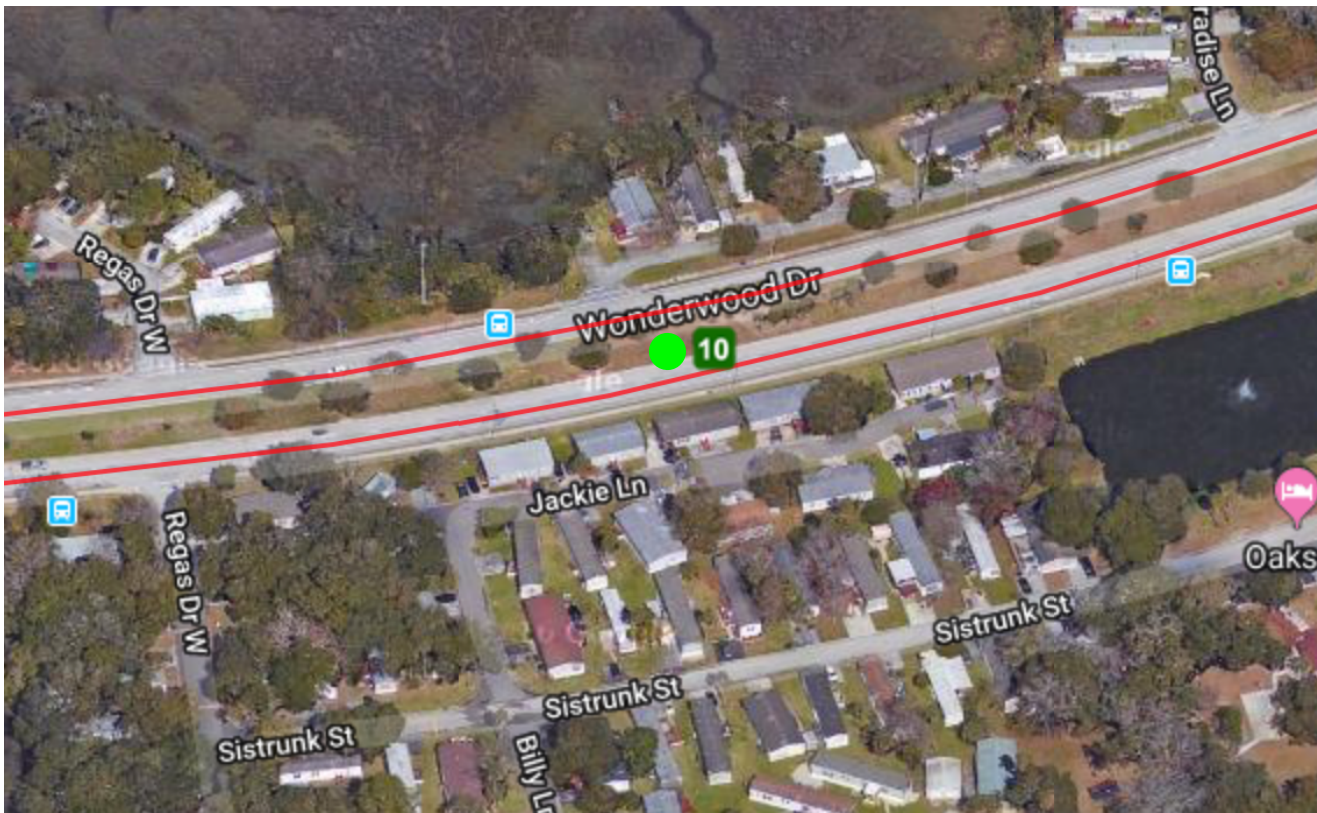
- After the last runner, start breakdown – disassemble tables, empty containers and prepare items for pick-up
- Clean up cups off roadway, walk 100 yards in both directions for cup clean up
- Keep bottled water intact – we use it later

Emergency Response

- In case of a cardiac incident, runner collapse, or other emergency, FIRST call 911, then alert the nearest ham radio operator, medical person, and Command Center. Know your location so you can provide it when asked
- Medical volunteers (EMT, first aid, CPR) are at some stations to monitor runners. You don't need medical training to spot a runner in trouble. Weaving and staggering are signs of trouble, although runners usually insist they are fine when you ask. Please note bib number of any runner who appear to be in rough shape, alert nearest medical person, ham radio operator, and call Command Center. When in doubt, call 911 first. EMS units are on call to respond to emergencies

Aid Station #7

Mile 10



Water Station – Checklist

- Get adequate rest the night prior
- Wear protective gloves and use cups only once
- Fill cups halfway
- Keep runners away from table
- Do not step out into the runners to distribute water
- Hold the cups from the bottom when dispensing
- Visually inspect roadway for any debris or unsafe condition
- Watch for emergency situations and report – Call 911 for emergencies, call Command Center for all health issues
- Monitor traffic flow and encourage runners to keep moving!
- Use caution when extending cup out and reaching over runners
- Know the surrounding area and medical stations and emergency reporting
- Use caution when removing cups from ground. Have a person to direct runners around person sweeping.
- If near intersection, be alert to pedestrian traffic and cyclists
- Don't splash runners with water unless they ask for it

Clean Up

- After the last runner, start breakdown – disassemble tables, empty containers and prepare items for pick-up
- Clean up cups off roadway, walk 100 yards in both directions for cup clean up
- Keep bottled water intact – we use it later

Emergency Response

- In case of a cardiac incident, runner collapse, or other emergency, FIRST call 911, then alert the nearest ham radio operator, medical person, and Command Center. Know your location so you can provide it when asked
- Medical volunteers (EMT, first aid, CPR) are at some stations to monitor runners. You don't need medical training to spot a runner in trouble. Weaving and staggering are signs of trouble, although runners usually insist they are fine when you ask. Please note bib number of any runner who appear to be in rough shape, alert nearest medical person, ham radio operator, and call Command Center. When in doubt, call 911 first. EMS units are on call to respond to emergencies



Aid Station #8

Mile 11

Water Station – Checklist

- Get adequate rest the night prior
- Wear protective gloves and use cups only once
- Fill cups halfway
- Keep runners away from table
- Do not step out into the runners to distribute water
- Hold the cups from the bottom when dispensing
- Visually inspect roadway for any debris or unsafe condition
- Watch for emergency situations and report – Call 911 for emergencies, call Command Center for all health issues
- Monitor traffic flow and encourage runners to keep moving!
- Use caution when extending cup out and reaching over runners
- Know the surrounding area and medical stations and emergency reporting
- Use caution when removing cups from ground. Have a person to direct runners around person sweeping.
- If near intersection, be alert to pedestrian traffic and cyclists
- Don't splash runners with water unless they ask for it

Clean Up

- After the last runner, start breakdown – disassemble tables, empty containers and prepare items for pick-up
- Clean up cups off roadway, walk 100 yards in both directions for cup clean up
- Keep bottled water intact – we use it later

Emergency Response

- In case of a cardiac incident, runner collapse, or other emergency, FIRST call 911, then alert the nearest ham radio operator, medical person, and Command Center. Know your location so you can provide it when asked
- Medical volunteers (EMT, first aid, CPR) are at some stations to monitor runners. You don't need medical training to spot a runner in trouble. Weaving and staggering are signs of trouble, although runners usually insist they are fine when you ask. Please note bib number of any runner who appear to be in rough shape, alert nearest medical person, ham radio operator, and call Command Center. When in doubt, call 911 first. EMS units are on call to respond to emergencies

Saratoga Classic

Volunteer Assignments

Ultimate
Racing Inc.

Aid Station 1 *(4-5 volunteers)*

Name _____

Phone _____

Aid Station 2 *(4-5 volunteers)*

Name _____

Phone _____

Aid Station 3 *(3-4 volunteers)*

Name _____

Phone _____

Aid Station 4 *(3-4 volunteers)*

Name _____

Phone _____

Aid Station 5 *(4-5 volunteers)*

Name _____

Phone _____

Aid Station 6 *(4-5 volunteers)*

Name _____

Phone _____

Aid Station 7 *(4-5 volunteers)*

Name _____

Phone _____

Aid Station 8 *(4-5 volunteers)*

Name _____

Phone _____