

St Johns County Fairgrounds 3K, 2K, and 1K Course Markings



The 2K and 1K races will use the same turn around. The courses will have markings on the ground in white paint indicating each route.

Flags and signs will help runners know when to turn.

Arrow signs and paint on the ground will help runners know where to go on each course

A golf cart will drive in front of each race to help runners know where to go.

3K – Runners complete 2 laps of the full course

2K – Runners turn at the 2K sign and complete 2 laps

1K – Runners turn at the 1K sign and complete one lap

St Johns County Fairgrounds 3K Course



The 3K course consists of two full laps around the course

Green line – first lap

Blue Line – second lap

1. Proceed from the start line to the first turn at the end of the field
2. Turn to the left and then proceed south
3. At the end of the straight go left around the horse stalls
4. Circle around the horse stalls and head back up North
5. Go to the end of the park then turn right and follow the tree line
6. Turn right and complete the course again
7. Bear to the left and proceed to the finish line

St Johns County Fairgrounds 2K Course



The course consists of two full laps
Green line – first lap
Blue Line – second lap

1. Proceed from the start line to the first turn at the end of the field
2. Turn to the left and then proceed south
3. At the end of the straight turn around at the 2K signs and flags
4. Go to the end of the park then turn right and follow the tree line
5. Turn right and complete the course again
6. turn to the left and proceed to the finish line

St Johns County Fairgrounds 1K Course

The course consists of one lap

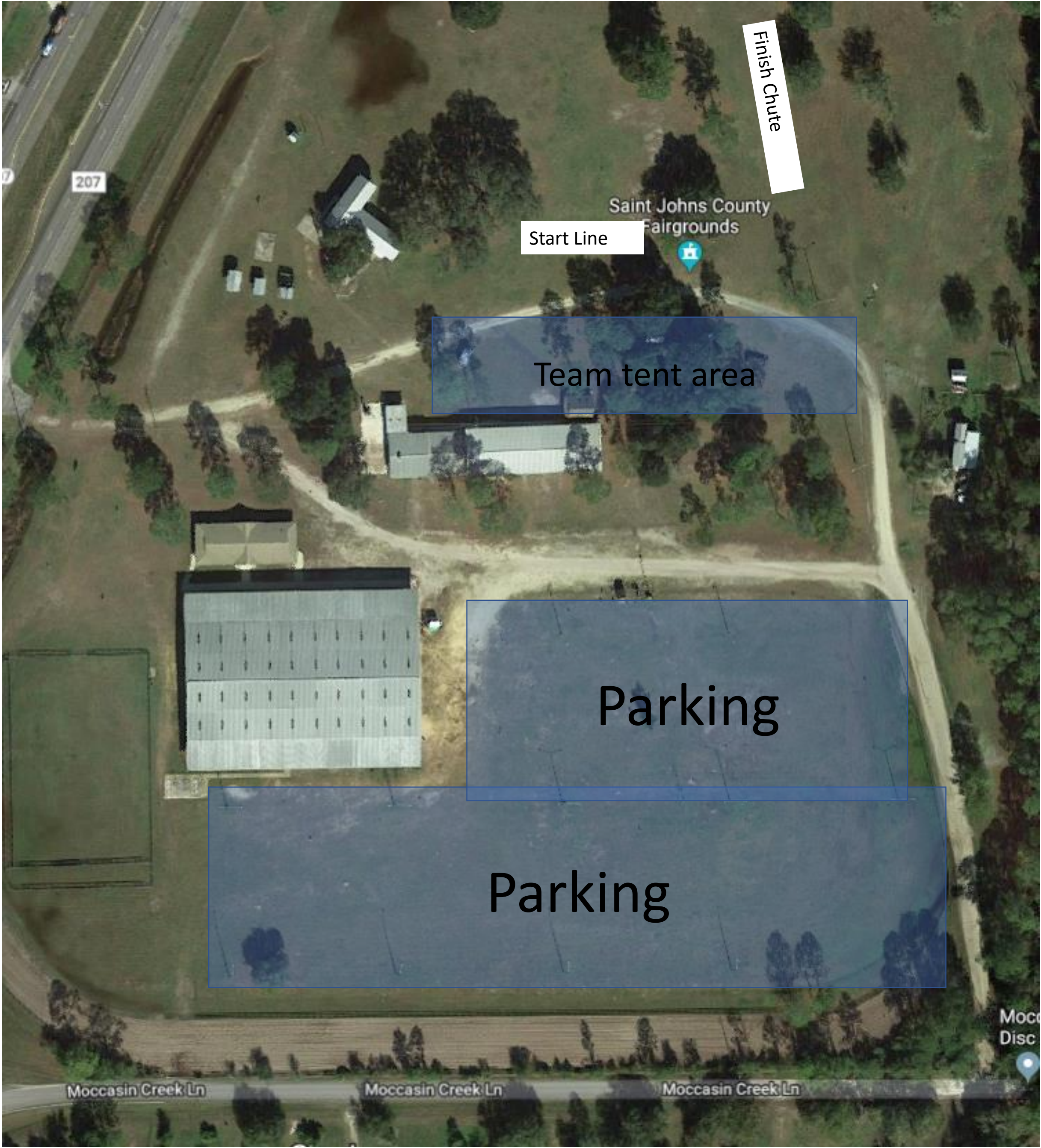
1. Proceed from the start line to the first turn at the end of the field
2. Turn to the left and then proceed south
3. At the end of the straight turn around at the 2K signs and flags
4. Go to the end of the park then turn right and follow the tree line
5. Bear to the left and proceed to the finish line



Parking Access Route (Yellow Route)
Go South on SR207
Turn Left onto Armstrong Road
Turn left onto Moccasin Creek lane
Turn left into the St Johns County Fairgrounds
Follow signs to parking area

Teams may unload tents and other supplies in the team tent area, then return to the parking area. (Green Route)





Finish Chute

Start Line

Team tent area

Parking

Parking

Moccasin Creek Ln

Moccasin Creek Ln

Moccasin Creek Ln

Mocc
Disc

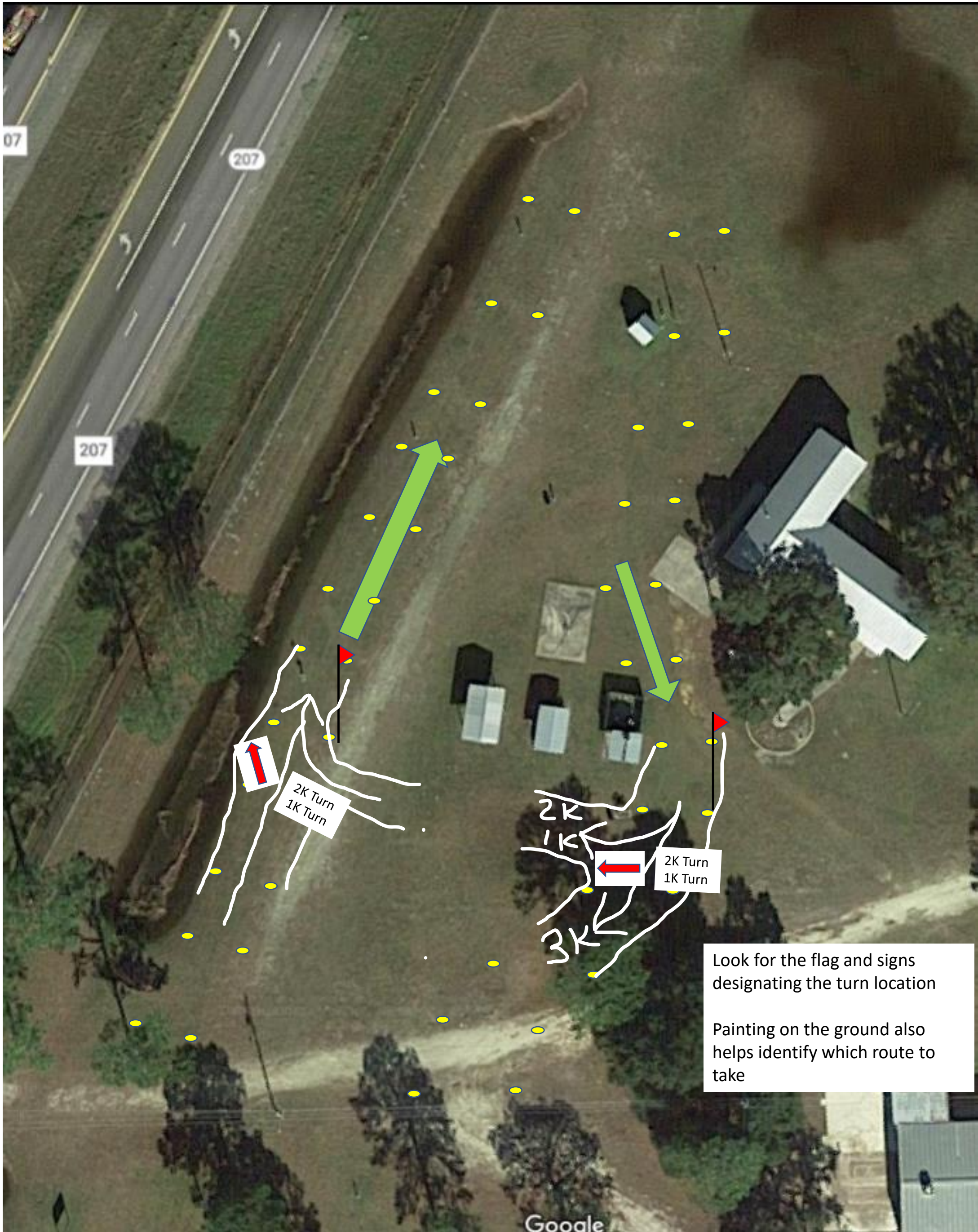
The finish line will be roped off in areas, please do not proceed past the barriers

You can meet your runner at the Finish Chute Exit after the race

St Johns County Fairgrounds Close up Start / Finish Line



St Johns County Fairgrounds Close up 2K and 1K Turn around

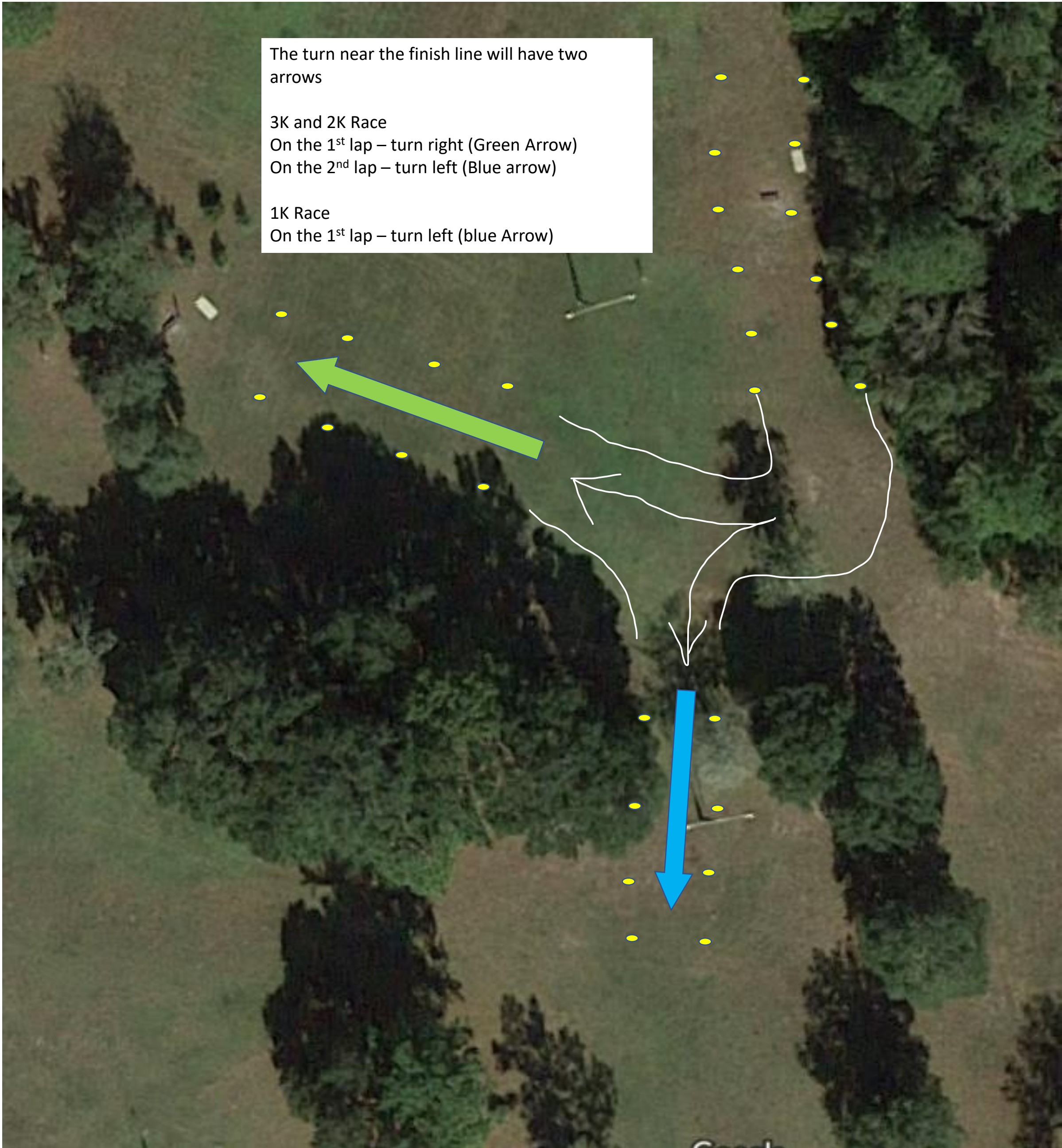


St Johns County Fairgrounds Close up turn near finish line

The turn near the finish line will have two arrows

3K and 2K Race
On the 1st lap – turn right (Green Arrow)
On the 2nd lap – turn left (Blue arrow)

1K Race
On the 1st lap – turn left (blue Arrow)



St Johns County Fairgrounds Close up turn near finish line

The turn near the finish line will have two arrows

3K and 2K Race
On the 1st lap – turn right (Green Arrow)
On the 2nd lap – turn left (Blue arrow)

1K Race
On the 1st lap – turn left (blue Arrow)

